

Welcome to A.P.T Studios & Gallery

This is APT's visual guide to our gallery. We hope this document will help you prepare for your visit.

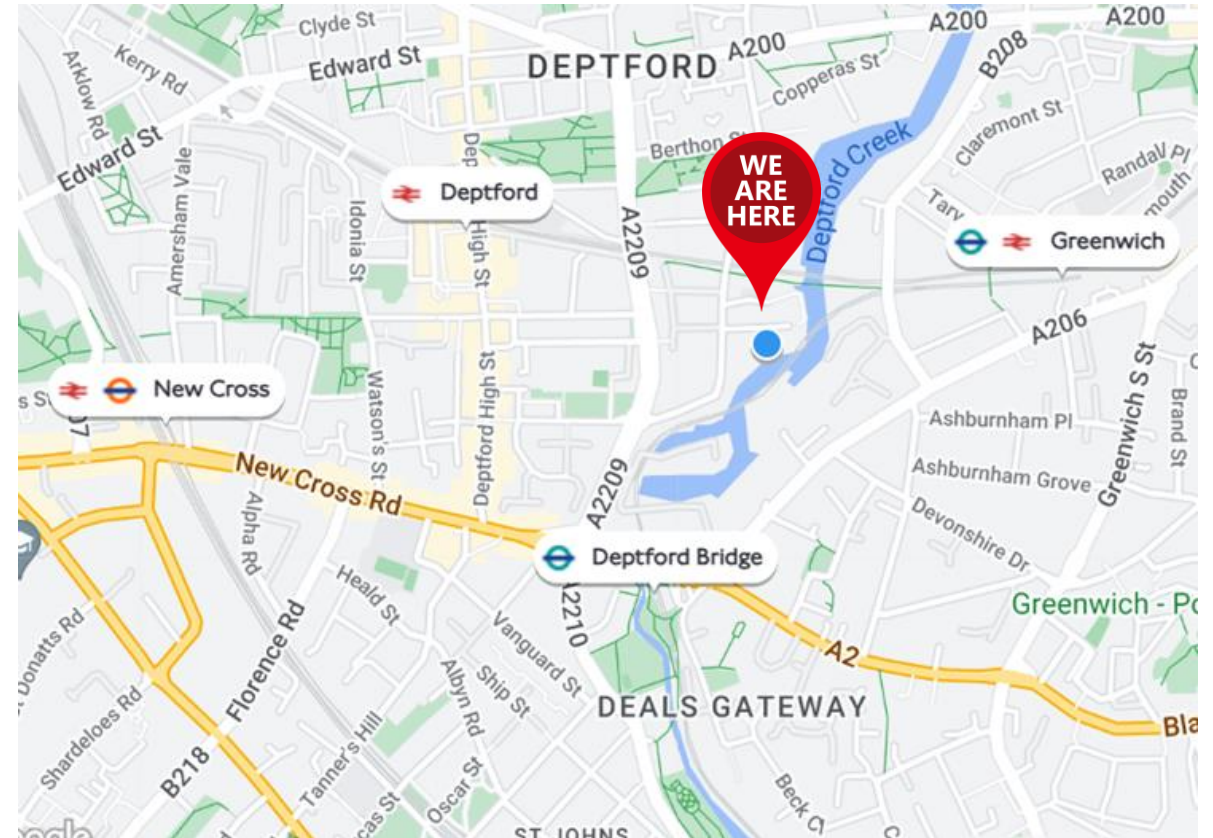
If you have any feedback on this visual guide or our access information, please contact us by email info@aptstudios.org or by calling 0208 694 8344.



Travelling to the Gallery

To travel to APT, we are nearest to Deptford Bridge Station, Deptford Station, Greenwich Station and New Cross Station.

Please visit TFL for further information about each stations access and planning an accessible journey. <https://tfl.gov.uk/transport-accessibility/plan-an-accessible-journey?intcmp=5331>



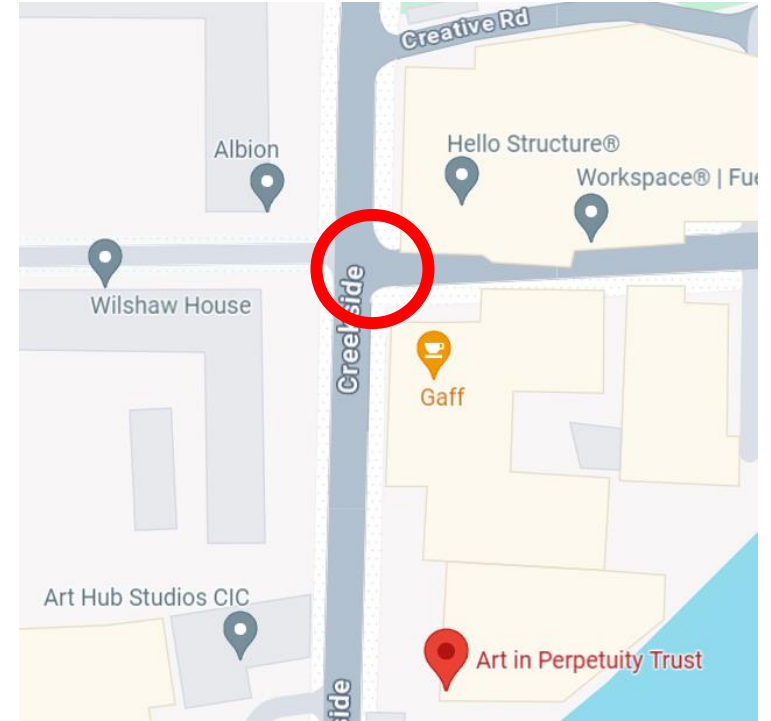
Getting to the Gallery

Our Gallery Entrance is on 6 Creekside and has step-free access. Creekside is usually a quiet road.

The pavements permanent access points for wheelchair users is circled in red on the map and seen in the below image. (See next page for portable ramp access)

The pavement directly outside of the gallery is slightly narrow.

During a Private View, the area outside of the Gallery may be loud and busy.



Arriving at the Gallery

Our gallery has step-free access with the assistance of a portable ramp.

If you require this, please contact us at:

info@aptstudios.org or call us on 020 8694 8344 ahead of your visit.



Arriving at the Gallery

This is the entrance to the Gallery. The door is located on the right-hand side.

On arrival the glass door may be closed like in the image, in some cases it might be locked for security measures, if someone has stepped away from the desk, but please don't let this put you off we are very much looking forward to your visit.

The exhibitions in the Gallery change every 1 – 4 weeks and each exhibition uses the space differently. The following pages show images of an example of ways the space is used.

For more information on current exhibitions, please visit our website at <https://www.aptstudios.org/future-exhibitions>



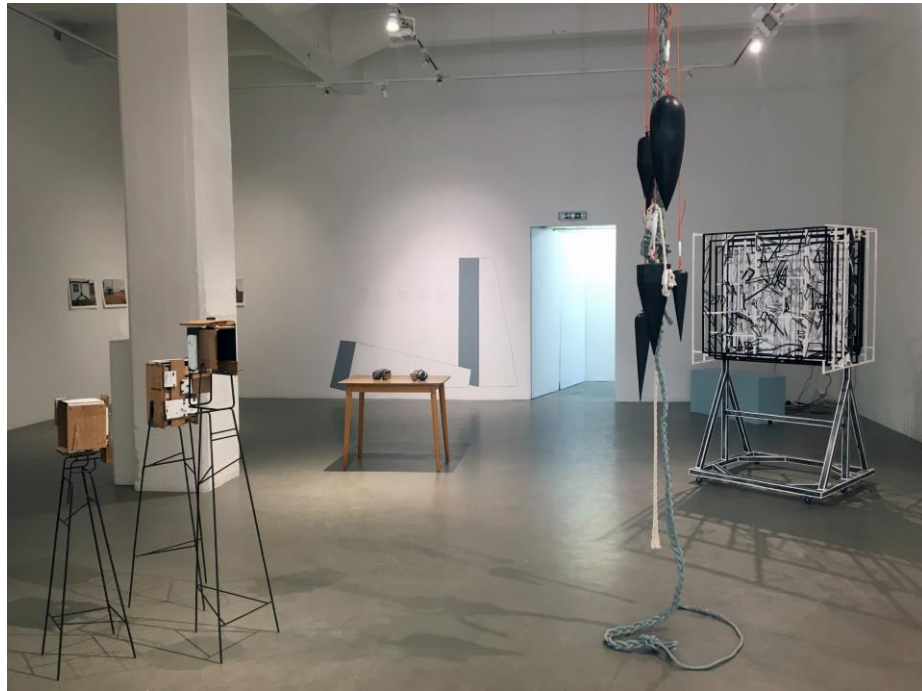
Inside the Gallery

These are some examples of how different the Gallery space can look depending on the current exhibition.



Inside the Gallery

These are some examples of how different the Gallery space can look depending on the current exhibition.

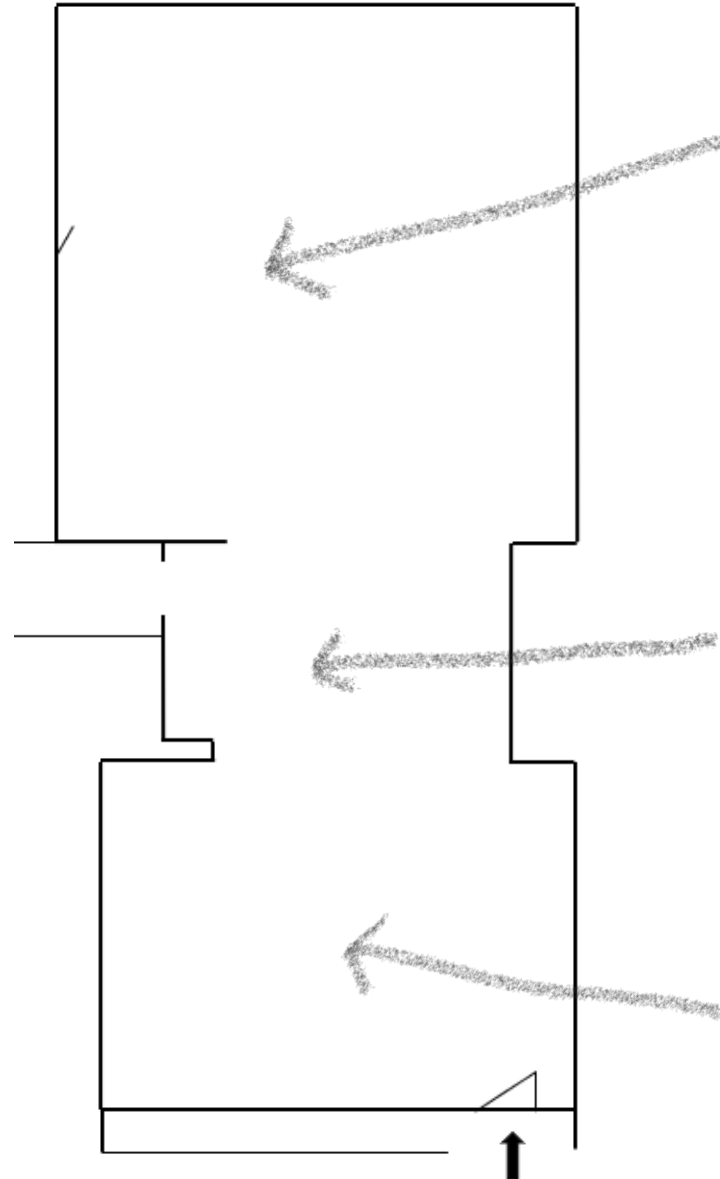


Inside the Gallery

The Gallery has three sections, the front, middle and back rooms. These are not divided by walls or doors. They are open spaces.

You will walk into the front room when you enter the Gallery.

The back room sometimes is used as a 'dark space' for digital and moving image works and may be sectioned off with a black curtain for some exhibitions.



Back room: sometimes used as a dark space with projections and moving image. There is no natural light in this space.

Middle room: which has an archway leading to the W/C. This space is usually bright.

Front room: direct natural light from skylights and front window.

Invigilators at the Gallery

The Gallery is invigilated by different people for each exhibition. You will find that the invigilators, in most cases, are the artists or curators of the show so can provide detailed information on the exhibition. There will always be one or two invigilators in the space.

You can ask the invigilator for any of these items if they make your visit more comfortable:

- Chair
- Magnifying Glass for reading text
- Large print exhibition materials
- Noise reduces headphones



Gallery Toilet

The Gallery has one single toilet which is an accessible and non-gendered toilet.

When you are in the middle room of the gallery, to your left is an archway that directly leads you to the toilet.

We don't currently have baby changing facilities in our toilet, but if you are visiting with small children and need somewhere private to change them then please ask one of our invigilators and they will find you a quiet space.

