

Art in Perpetuity Trust | Graduate Studio Programme | 2018 to 2019

A.P.T's **Graduate Studio Programme** offers a one-year lease on **three** studios at A.P.T's studio complex on Creekside, Deptford, South East London. Studio rent and electricity usage will be charged.

A.P.T is offering three studios to artists who have graduated since 2016 for one year from 1 May 2018 to 30 April 2019.

As a member of A.P.T the selected graduate artists will be involved with our exhibition programme and the artist selected for Studio G18 will be invited to sit on A.P.T's Gallery & Projects committee. All three recipients of the Graduate Studio Award will be required to participate in our annual Open Studios Weekend and they can take part in the wide range of education projects and events that we run throughout the year. With forty two artist-members there is considerable opportunity to collaborate with our artist-members, and with local arts initiatives and festivals such as South London Art Map Last Fridays, Deptford X and Art Licks.

To apply for a studio within our Graduate Studio Programme please complete the studio application form and combine with supporting documentation (CV + 10 images) into a single PDF document and email to aptlondon@btconnect.com

Viewing Days | Saturday 24 February 2018 between 12noon and 2pm. Please come to the A.P.T Gallery where an A.P.T artist-member will meet you and take you to see the studio

Application Deadline | 5pm on Wednesday 28 February 2018.

Studio G18 | Welding Shed Studios

Studio Lease | From 1 May 2018 to 30 April 2019

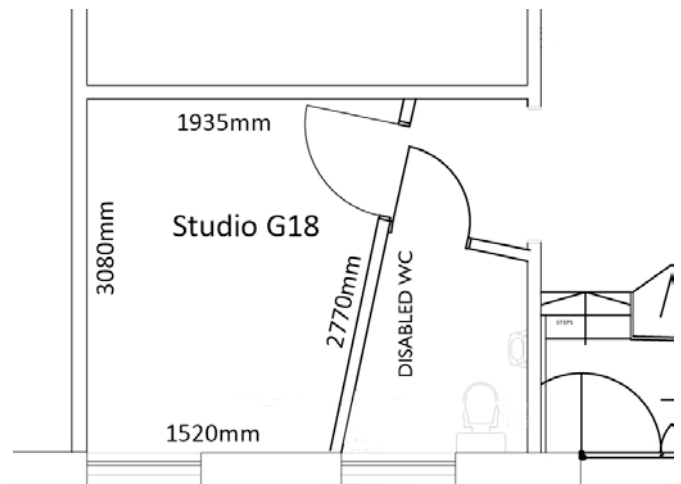
Studio Area | 123 sq ft + Mezzanine Storage Area (56 sq ft) this studio is fully accessible

Rent | £8.65 p / sq ft (studio) £3.25 p/ sq ft (mezzanine)
£103.83 per month (A.P.T Trustees will review the studio rent during 2018)

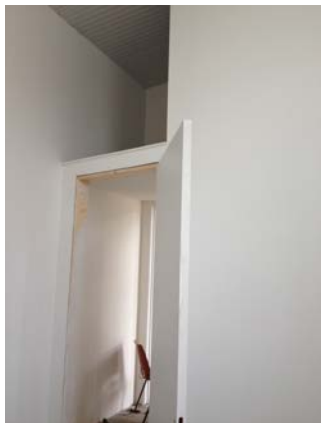
Deposit | £311.49

Studio Lease Administration Charge | £100

The selected artist for Studio G18 will be invited to sit on A.P.T's Gallery & Projects Committee



Art in Perpetuity Trust - Welding Shed Studios



Studio M1

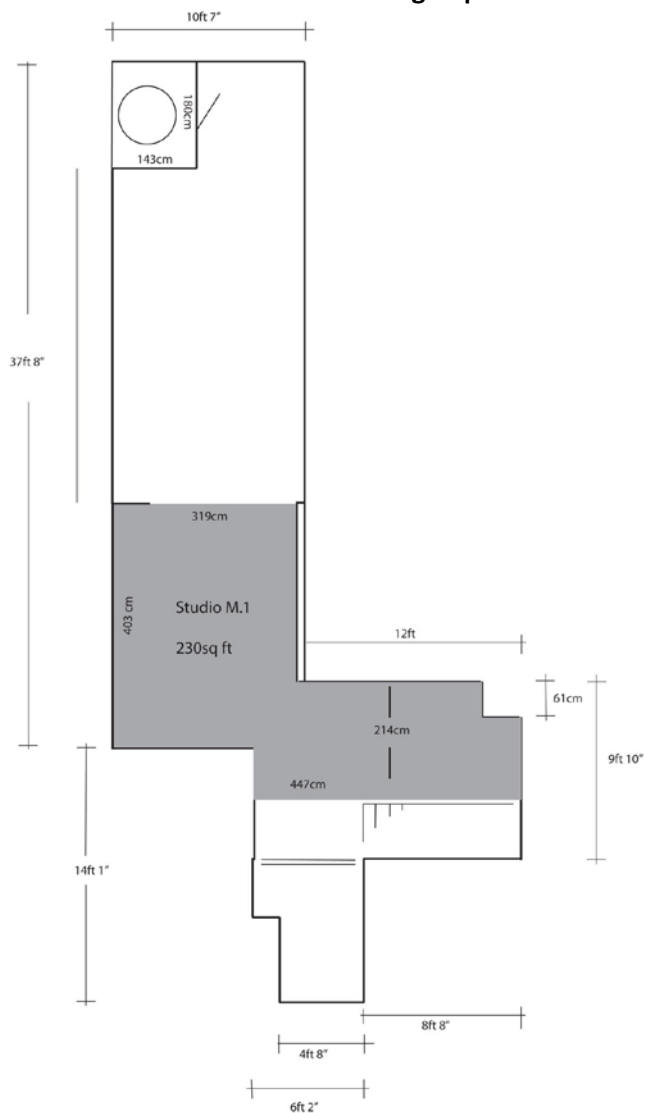
Studio Lease | From 1 May 2018 to 30 April 2019

Studio Area | 230 sq ft (approx) with no natural daylight and access is via stairs. In addition, the studio has to be accessed by the office manager because the consumer unit, electricity meters and alarm systems are housed in a cupboard in the space.

Rent | £65.40 per month (this includes electricity usage) and the lower rent is to allow for the low ceiling height, access restrictions and conditions. (A.P.T Trustees will review the studio rent during 2018)

Deposit | £196.20

Studio Lease Administration Charge | £100



Studio M2

Studio Lease | From 1 May 2018 to 30 April 2019

Studio Area | 223 sq ft (approx) with no natural daylight and access is via circular stairs. In addition, the studio has to be accessed by the office manager because the consumer unit, electricity meters and alarm systems are housed in a cupboard in the space.

Rent | £65.40 per month (this includes electricity usage) and the lower rent is to allow for the low ceiling height, access restrictions and conditions. (A.P.T Trustees will review the studio rent during 2018)

Deposit | £196.20

Studio Lease Administration Charge | £100

